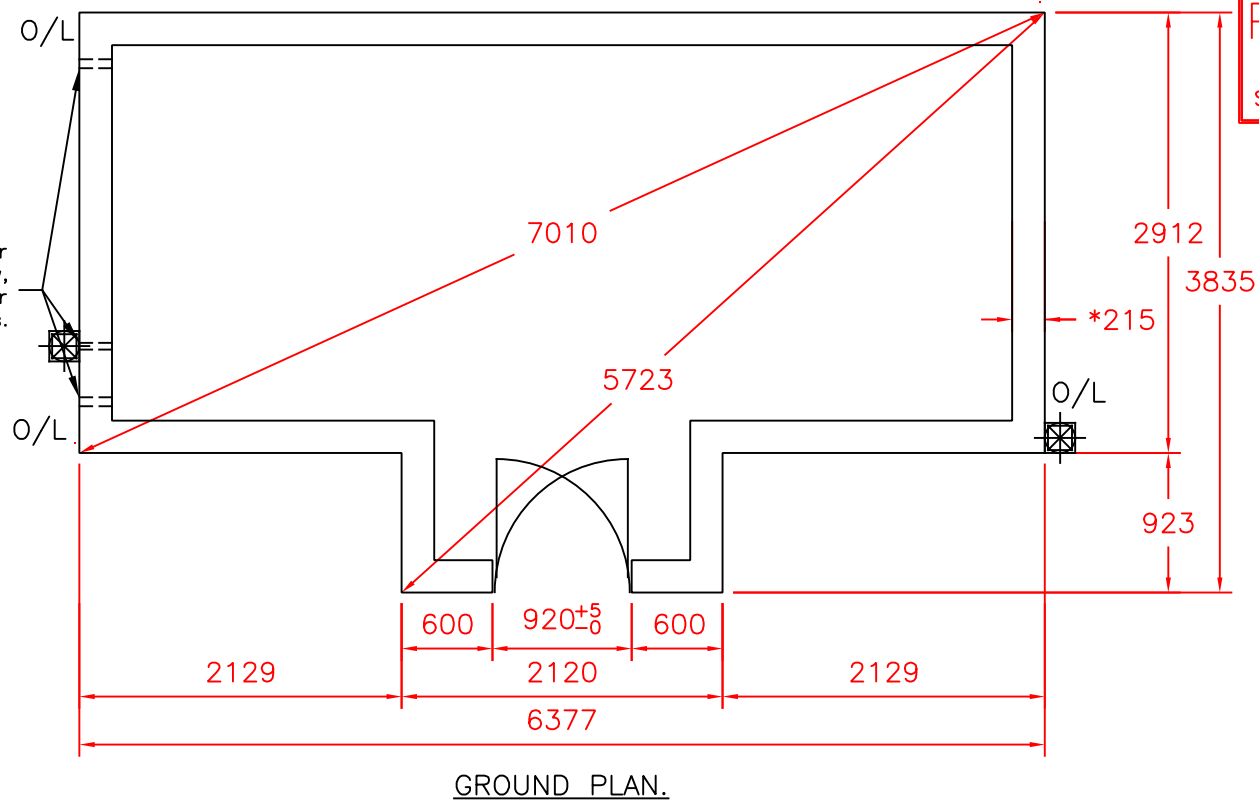


- The Torberry National Trust Greenhouse Range features:
1. Glass:
    - 4mm thick clear, toughened safety glass.
  2. Door:
    - Opening in & Hinged on the left. Brass furniture and National Trust omega door badge fitted as standard.
  3. Finish: Polyester powder coating. Frame colour - As stated on customer order form. Bench & Cold Frame colour - As stated on customer order form.
  4. Materials: Aluminium extrusions with stainless steel fixings.
  5. Frame: Alitex Traditional suite of extrusions, which includes the "Heavy Bar" portal frames & cast aluminium spandrel brackets.
  6. Shades: - Optional.
    - Either 1 pair of tapered shades on the lobby side or rectangular shades under the roof vents.
  7. Other fittings: All other fittings are available at additional cost.
  8. Downpipes: If no reservoir is specified downpipes to be taken to ground with shoes.
  9. Ridge decorations:
    - Finials and Fleur-de-Lys cresting fitted as standard. Ball finial option is available.
  10. Ventilator actuation:
    - Roof vents are automatically operated (Bayliss passive system).
    - Side vents are manually operated.
  11. Pre-drilled holes in the gable verticals and roof spans for high level shelving (shelving is available at extra cost).

Down pipe & overflow pipe holes through gable end wall for optional Reservoir. See GP\_ASSIST-024/026 for hole dimensions and reservoir position.

Gullies to be provided by builder as shown. These should go to surface drainage or to a soakaway.

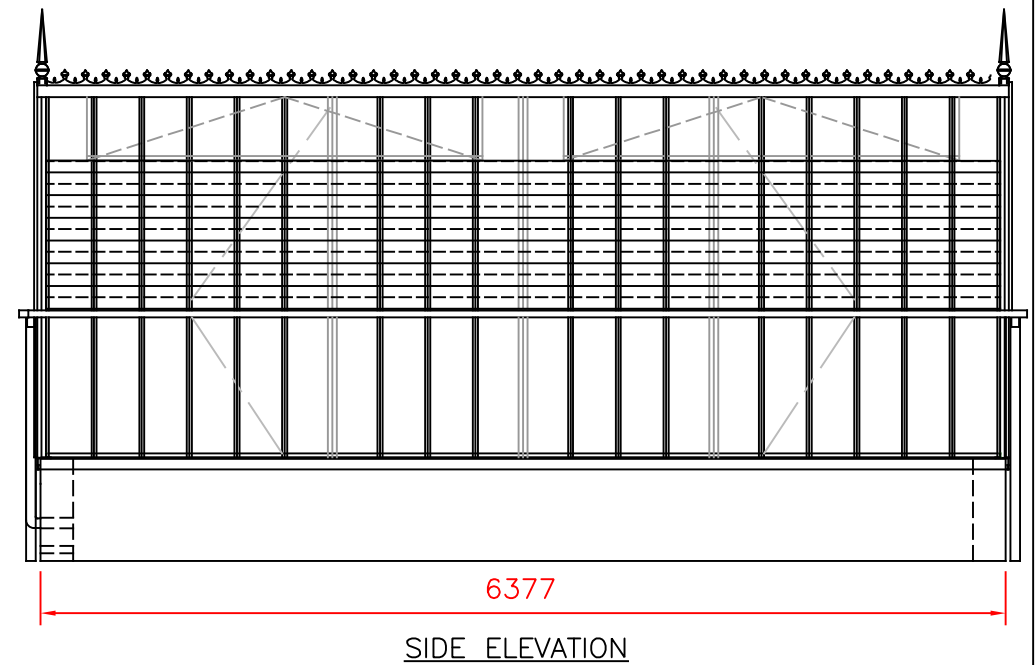
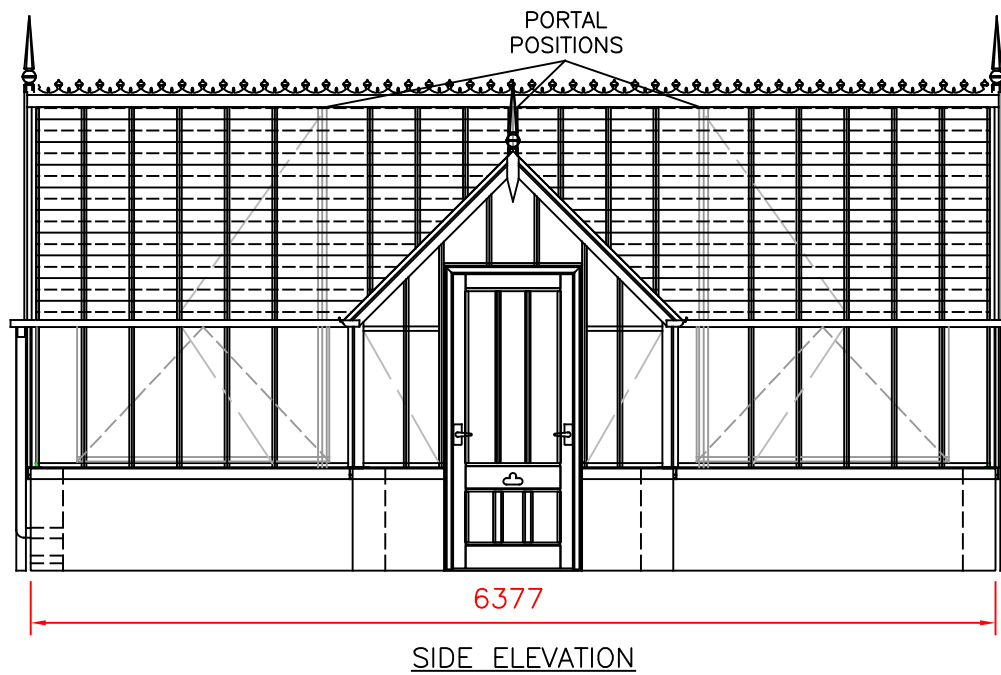
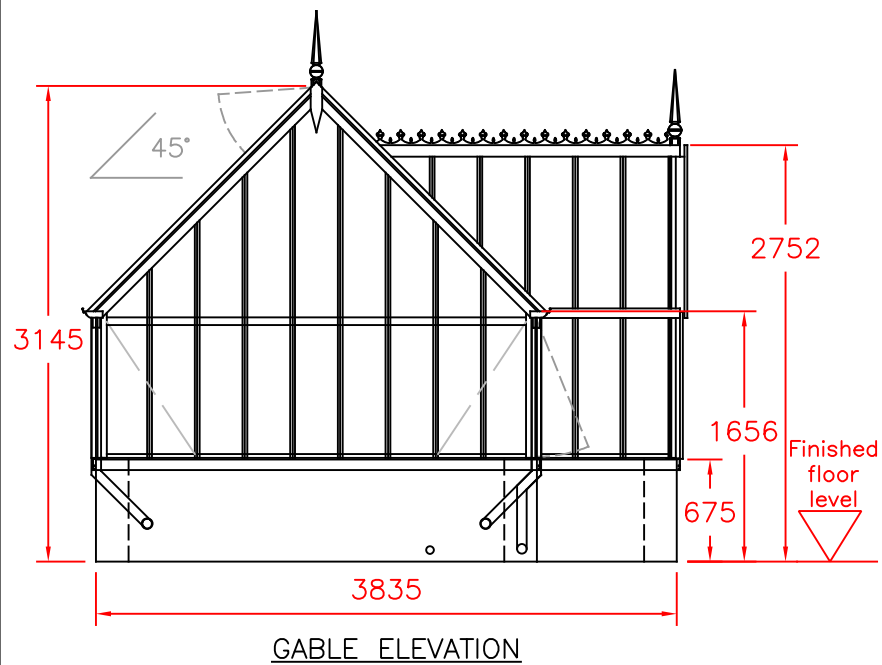
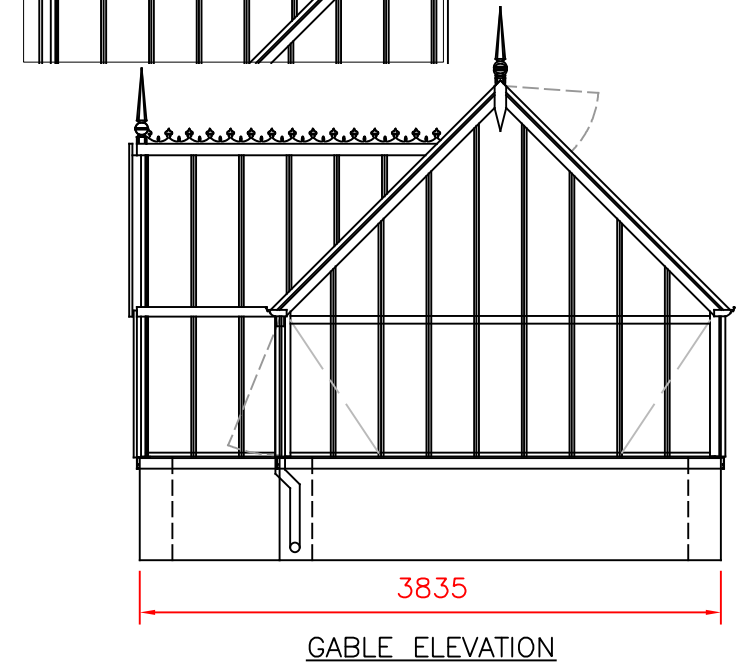
Holes by builder for downpipe & overflow, see reservoir installation notes.



**PROPOSAL ONLY**  
DO NOT BUILD TO THIS PLAN, SPECIFICATION STILL TO BE CONFIRMED



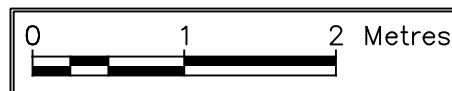
Detail of Ball finials & no cresting option.



O/L = GUTTER OUT-LET  
DIMENSIONS IN MILLIMETRES  
PLEASE SEE ATTACHED BUILDING NOTES.  
TOLERANCE: + OR - 5mm, EXCEPT AT DOORWAY.

- \* 215mm - Nominal dimension, wall should be Solid with header course.
- \* 102mm - Nominal dimension, single course wall Cold frames & Internal Planters Only.

The dimensions shown on this drawing are those of the required brick base. As our structures are manufactured to accommodate these dimensions the completed base MUST correspond exactly (by steel tape measure) to the measurements on this drawing. If the brick base is incorrect in any way, the expense of alterations and delays in installation etc., are the responsibility of the builder and/or the customer.



<p>GREENHOUSES AND CONSERVATORIES</p>		TITLE KEW GREENHOUSE COLLECTION THE AUGUSTA (Greenhouse Proposal)		
		DRAWN SDB	DATE 13.03.17	SCALE 1:50 @A3
CHECKED	CHECKED	CUSTOMER / ORDER No.		
		REV		